

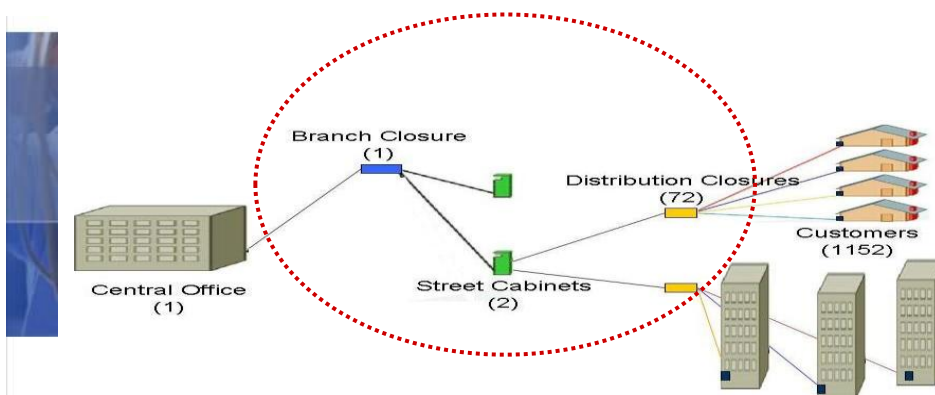
Pasivní prvky 3M na optické přístupové síti

Martina Kubalíková



© 3M 2010. All Rights Reserved.

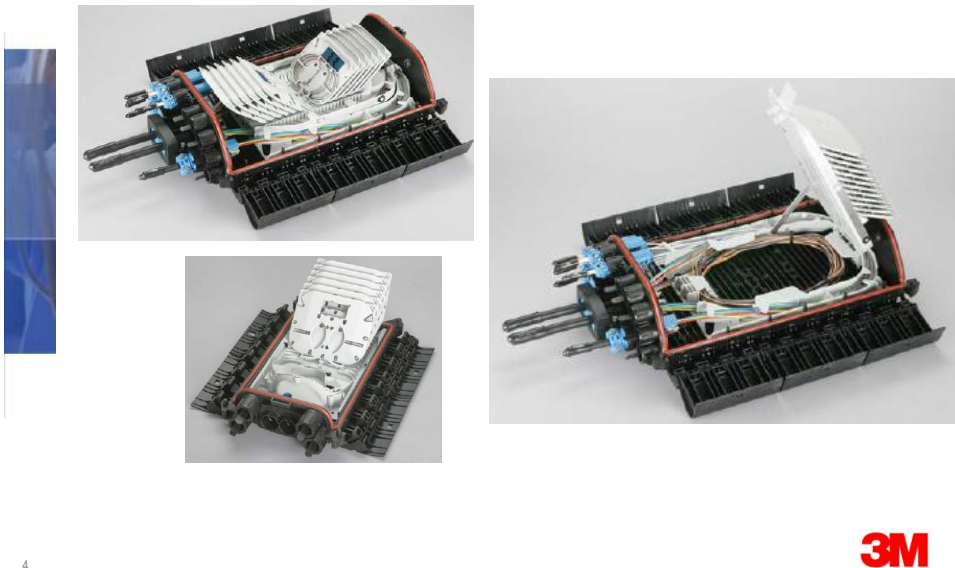
Solutions for Outside Plant



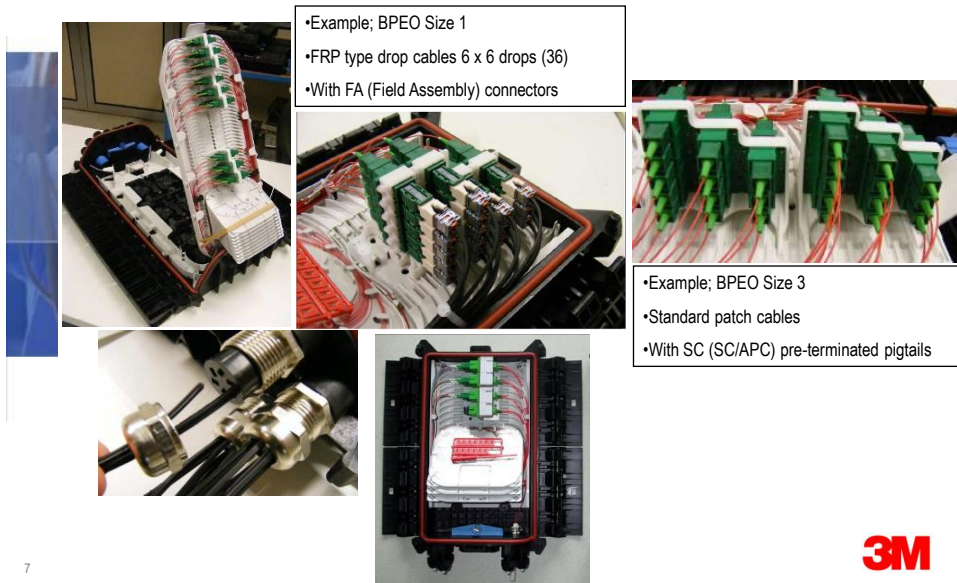
3M Optical Fiber Splice Closures Range



BPEO Closure Range



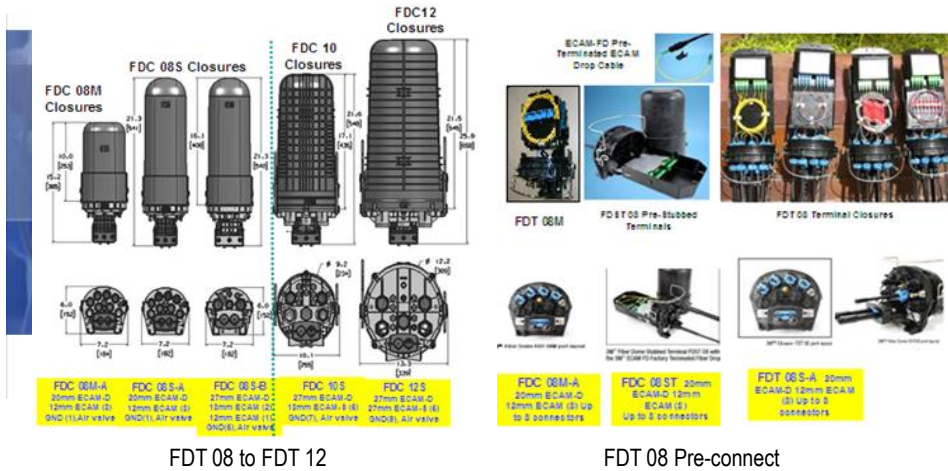
BPEO Terminal Drop Closures



BPEO Special Applications



3M Fiber Dome Terminal Closures



9

3M

FDT 08S Direct Splice

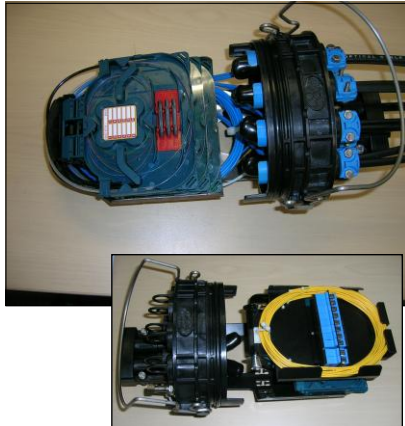


- Hermetically-sealed fiber dome terminal closure for aerial, buried above-grade, and buried below-grade applications
- Accommodates up to 12 direct fusion or mechanical spliced drop terminations
- Accommodates 4, 6, or 8 SC/APC or SC/UPC ECAM FD factory terminated drops
- Oval main cable port accommodates two 20mm (0.79") all-dielectric or armored cables
- Designed for butt, single or ribbon fiber applications
- Splice Capacity (single & mass fusion)
- FDT 08: 72 single & 216 mass fusion

10

3M

FDT 08M Direct Splice

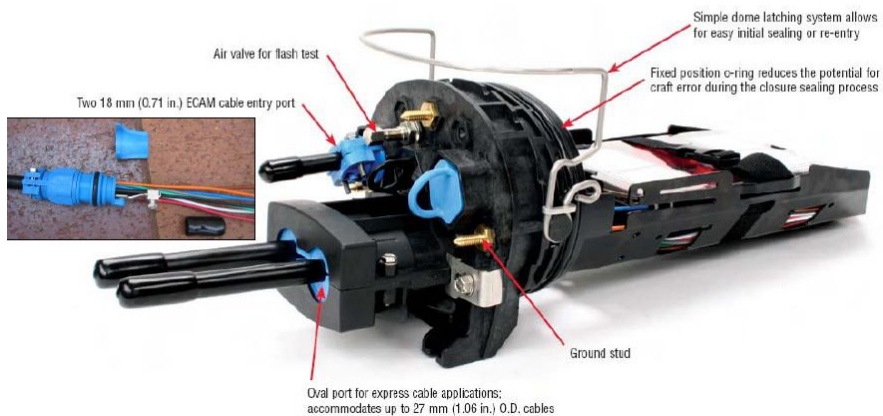


- Hermetically-sealed fiber dome terminal closure for aerial, buried above-grade, and buried below-grade applications
- Accommodates up to 12 direct fusion or mechanical spliced drop terminations
- Accommodates 4, 6, or 8 SC/APC or SC/UPC ECAM FD factory terminated drops
- Oval main cable port accommodates two 20mm (0.79") all-dielectric or armored cables
- Designed for butt, single or ribbon fiber applications

11

3M

FDC 08S Direct Splice

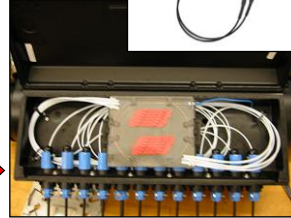


12

3M

SLIC 530 Direct Splice

12mm ECAM Drop Cable Entry System



- Weather-tight, free-breathing, aerial, strand mount fiber terminal closure
- Comprised of two separate chambers: Distribution cable splice and Drop termination chamber
- Allows easy & secure access for service connections & drop maintenance (cleaning & testing) without entering the closure splice chamber
- Designed for strand-mount in-line, butt, or taut sheath single or ribbon fiber applications
- Accommodates up to 12 fusion or mechanical direct spliced drops
- Accommodates 4, 6, 8, & 12 factory terminated SC/APC or SC/UPC ECAM FD Fiber Drops

3M

13

Fiber Dome Heat Shrink Closure – FDC-HS-L5 (S4)



Features :

- O-ring sealing
- Latching/Locking Mechanism
- L5 = 510x180 mm – 1 oval port (two 25 mm cables), 5 round ports (20 mm)
- S4 = 485x160 mm – 1 oval port (two 28 mm cables), 4 round ports (20 mm)
- L5 = 6 splices trays max / S4 = 2 splices trays max
- 2533 trays 24 fusion splices
- 2,4 mm x 60 mm fusion sleeves
- 2 ground lugs max

Benefits :

- Flash Test = 10 PSI
- IP 68
- Simple & Flexible design for high installation productivity
- Trays holder for mechanical & ribbon splices
- Price competitive solution

3M

14

3M Communication Markets Division

3M Fiber Dome Heat Shrink Closures: FDC-HS-L5 & FDC-HS-S4

2533 Tray



Splice Inserts



For single fusion
2.4mm x 60mm
sleeves



For 4- and 6-fiber
ribbon, and FibrLok
2529



For 8- and 12-fiber
ribbon



15

Light Linker (LL2) Fiber Optic Splice Closure

Choices for Flexible Design

3M offers a full range of closure sizes in diameters from 76 mm-305 mm (3" to 12"), and lengths to 914 mm (36"). This range gives system designers the flexibility to locate splices for maximum reliability. Larger fiber optic closures can be used to provide extra storage space for ribbon or buffered tube fiber. 3M™ Fiber Optic Closures are compatible with all types of fiber optic cable in cut, uncut and taut sheath applications. Interchangeable endplates allow each closure to house up to 8 cables per end.

Applications

- Watertight
- Underground
- Aerial
- Central Office/Building
- Wall Mount (LL2-418 only)



3M Innovation



16

LL2 Series Models 4, 5, 7, 8, 9 and 12 Fiber Optic Closures

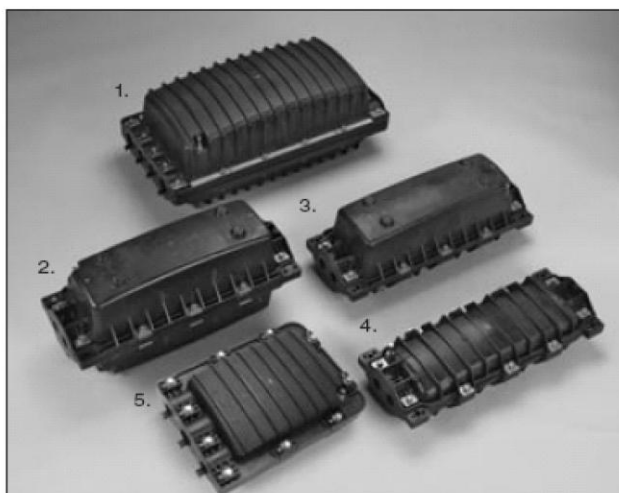
Features	Benefits
Constructed from thermoplastic material	Extremely chemical and U.V. resistant
Sheath retention, central member termination system	Allows easy installation and reduces the potential for microbending
No special tools required	Low cost installation
Can be flash tested	Ensures seal integrity
Complies with Telcordia (formerly Bellcore) GR-771 requirements and international standards for fiber optic splice closures	Lab tested under various applications
Hinged trays	Allows for easy fiber organization and access to multiple levels
Plugging spools are provided in each kit	Allows extra cables to be added at any time
Closures are available in standard black and gray fire retardant plastic	Meets requirements for vault and building entrance applications
Anti-rotation stops are provided in each kit	Maintains closure stability during assembly and fiber splicing
Slack trays may be added below tray platforms	Allows storage of ribbon or buffer tube fiber
A variety of kits are available for closure re-entry, adding cables to existing splices or converting butt splices into inline configurations	All plant configurations can be accommodated



3M

17

2178 Family Fiber Optic Splice Closures



3M™ FIBER OPTIC CLOSURES 2178

1. 2178-XL
2. 2178-LL
3. 2178-LS
4. 2178-S
5. 2178-XSB

3M

18

2178 Family Fiber Optic Splice Closures

3M Fiber Optic Splice Closure: 2178 Product Family

- Product Features for Base Models -

Product Number	Size in. (mm)	Splice Configuration	Cable Entry Ports	Maximum Splice Capacity
2178-XSB	14.6 x 10.1 x 4.6 (369.8 x 256.5 x 117.3)	Butt	3 Butt	48 Single Fusion 144 Mass Fusion
2178-S	21.9 x 8.5 x 4.7 (556.3 x 215.9 x 119.4)	Inline Butt	4 Inline 2 Butt	96 Single Fusion 288 Mass Fusion
2178-LS	21.9 x 8.5 x 8.0 (556.3 x 215.9 x 203.2)	Inline Butt	4 Inline 2 Butt	288 Single Fusion 864 Mass Fusion
2178-LL	21.9 x 8.5 x 11.3 (556.3 x 215.9 x 287.0)	Inline Butt	4 Inline 2 Butt	288 Single Fusion 864 Mass Fusion
2178-XL	26.0 x 13.3 x 11.0 (660.4 x 336.6 x 279.4)	Inline Butt	8 Inline 4 Butt	576 Single Fusion 1728 Mass Fusion



19

2178 Family Fiber Optic Splice Closures

❑ **Adaptable to any environment** – highly chemical-resistant material construction & gasket seal technology makes it ideal for manhole, handhole, aerial, pedestal, and direct buried applications; fire retardant for cable vault & building applications

❑ **Easy to install** – requires no special tools or complicated training procedures

❑ **Simple and economical reentry** – reusable gasket seal allows easy reentry with no additional material costs

❑ **Flexible** – multiple cable entry options allow for both butt and in-line configurations for aerial, buried, and underground applications

❑ **Expandable** – interchangeable parts permit expansion of cable entry ports and splice capacity to meet current and future network needs without splice rebuilding

❑ **Versatile** – small to large (24 to 1728 individual or ribbon fiber capacity, flame retardant or OSP protection with common functionality & installation procedures



20

2179-CS Fiber Optic Splice Closure

Molded plastic enclosure!
Fully mechanical.
No special tooling!



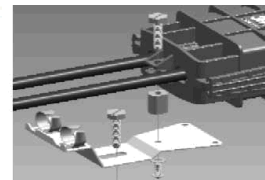
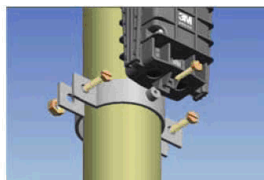
For buried, underground, aerial and pedestal applications!

Outside Dimensions (LxWxH);	15,7" x 6,9" x 4,2"
Splice chamber space (LxWxH);	12" x 4,7" x 3,3"
Weight (closure body);	1715 gr
Cable port diameter;	0,4-1 inch
Number of Cable entry ports	4 (2 on each side)
Quantity of cables installed	2-4
Maximum number of splice trays	
2524SR	2 (24 splices per tray)
DIN	4 (12 splices per tray)
Looping length of bare fibers	>2 x 0.8m
Looping length of loose-tube	>2 x 0.8m

3M

21

2179-CS Fiber Optic Splice Closure



Features :

- Dim = 447x175,2x106,7 mm
- 2 cables entrance at each end
- Cables diameter from 10,1 to 25,4 mm
- 4 trays of 12 splices ⇔ 48 splices
- IP68

Advantages – Benefits :

- Compact size
- Butt or In Line splicing
- Sliding latch mechanism
- Wide area of usage = aerial , buried , pedestal
- Proven sealing technology

3M

22

2179-C Series Closures



2179CLS Closure



2179CLM Clos



*2179CL with 2525 trays



23

3M

'Last Mile' Branch Off Closures

- μ QODC, QODC Closure for G657 Fibre Splices



- OSSC & OSLC



- BOC (Branch Off Closure)



24

3M

8900D Series Cabinet

- Outdoor Modular design
- IP-55
- IK-08
- Double-wall
 - Painted steel Outside
 - Aluminum Inside
- 3M plating and sealing
- 3M 4411 pedestal seal



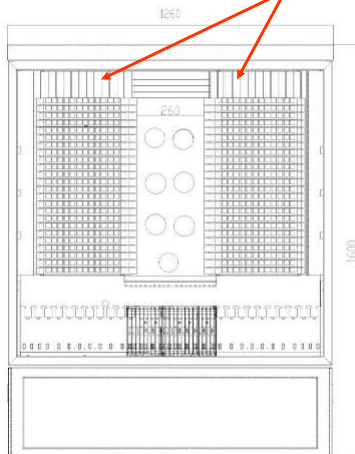
8900DL 8900D 8900DS

25

3M

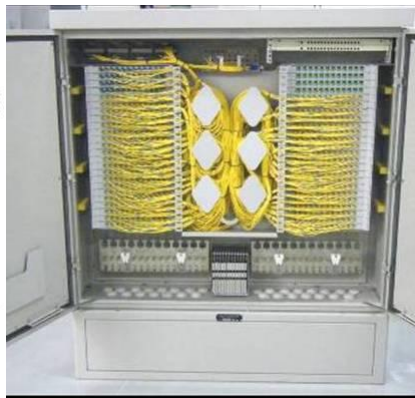
8900DL

Splitter



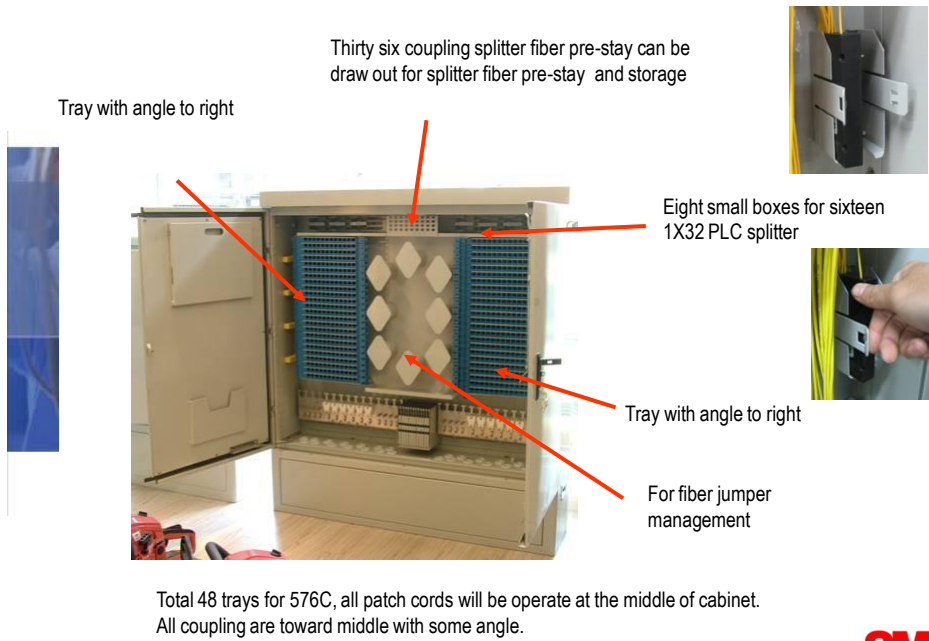
576C fiber cross cabinet with 16 1x32 PLC splitters

1600mm X 1360mm X 360mm



26

3M



27

3M

8900D



28

3M



Total 24 trays for 288C, all patch cords will be operate at the right of the cabinet. All couplings are towards right with some angle.

The tray with the wire management.



12 trays for direct splice.



25 PG29 for optical cable in-out.



29



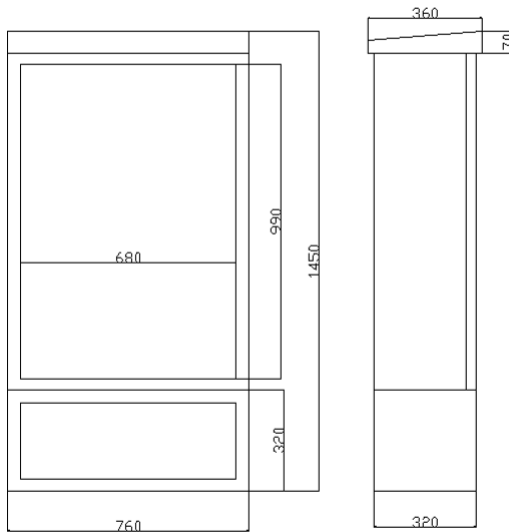
Three small boxes for six 1X32 PLC splitter



The splitter can be fix easily



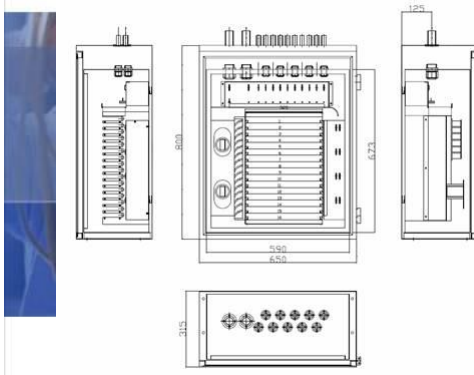
30



3M

31

8900DS



144C fiber cross cabinet with 2 1x32 splitters

800mm X 650mm X 315mm

- All fiber cables will come into cabinet from the top
- Wall mount installation
- The hollow structure avoid to clot water
- Special tray for 1x32 splitter

3M

32

MDU Dbx 89 series Metallic Distribution Boxes



•MDU Dbx 8912EU M :

- Metallic box with locking mechanism
- Organizer type PBPO/C 12 fibers (common)
- Window Cut Cable application
- Storage area for micro structures or loose tubes
- 4 trays 5 mm or 2 trays 10 mm
- 2 SC/APC couplings
- Dimensions : 300 x 180 x 55 mm
- IP 44



•MDU Dbx 8934EU M :

- Metallic box with locking mechanism
- Separate access for drop connections
- Capacity of 32 SC/APC couplings
- Uncut cable management
- Storage of the patch cords management
- Dedicated space for jacketed splitter
- Dimensions : 430 x 355 x 100 mm
- IP 44



•MDU Dbx 8980EU M :

- Metallic box with locking mechanism
- Separate access for drops connections
- Capacity of 73 SC/APC couplings
- Uncut cable management
- Storage of the patch cords management
- Dedicated space for jacketed splitter
- Dimensions : 450 x 400 x 131 mm
- IP 44

33

Communication Markets Division

Díky za pozornost!

mkubalikova@mmm.com



3M