

OFS – optical fiber solution

Leading Optical Innovations

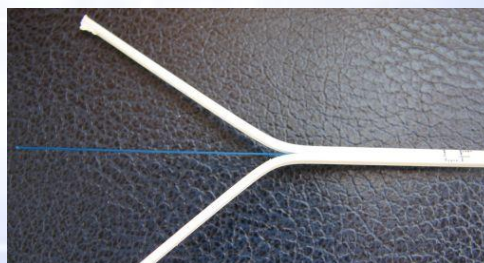
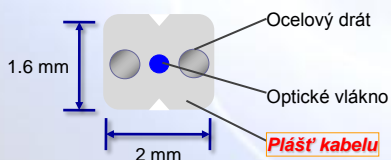
Low Friction Indoor Drop Cable

Patrick Stibor

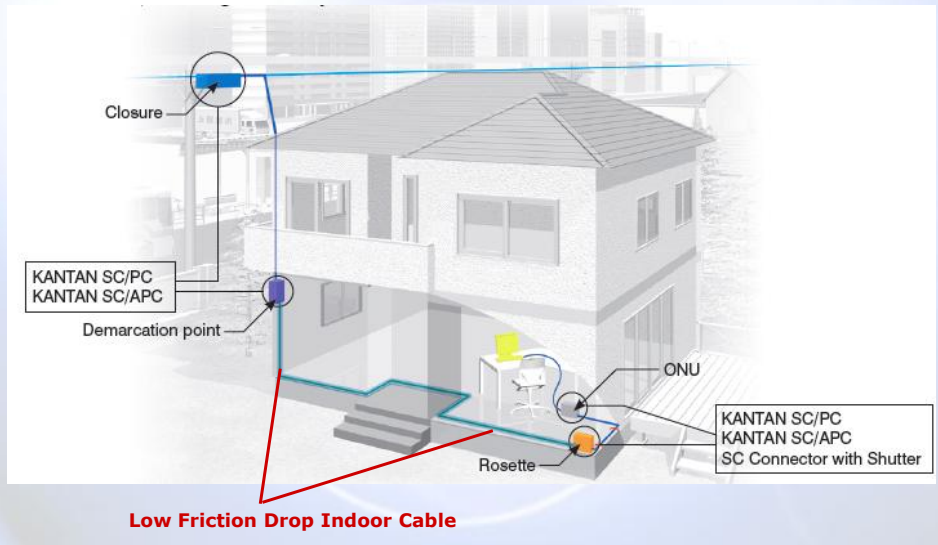


Low Friction Drop Indoor Cable

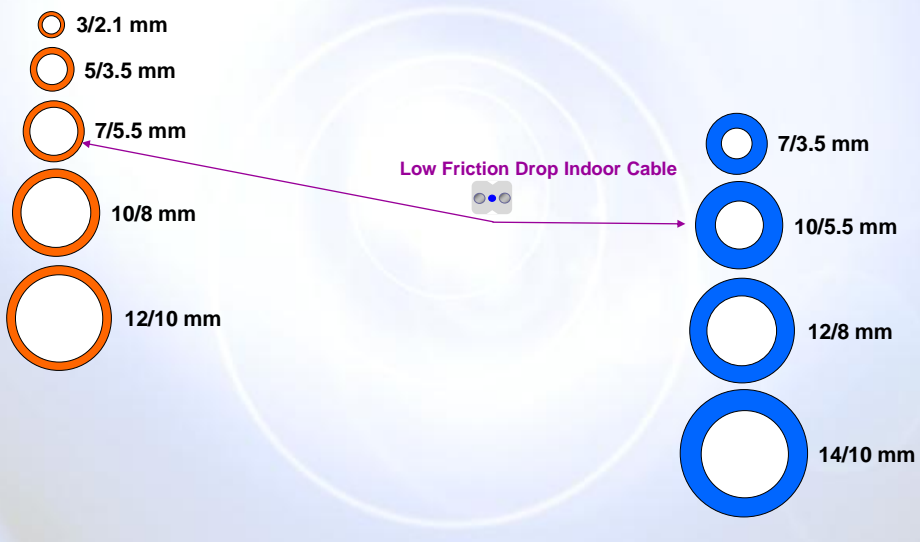
- Vnitřní účastnický kabel
- Nízký koeficient tření pláště kabelu
- Malé rozměry 2 x 1,6 mm
- Ocelové pevnostní tyče



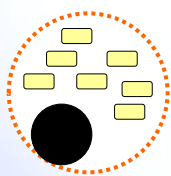
Typická použití kabelu



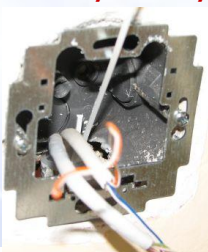
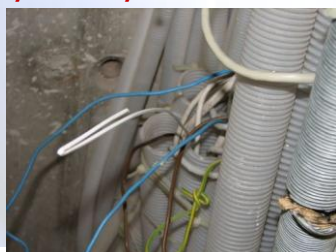
Tenkostěnné trubičky a trubičky tlustostěnné



Využití stávajících trubkových rozvodů

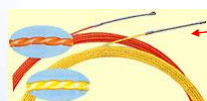


Lidově řečeno: využití husích krků (pešlovek)
Ty mohou být i obsazené dříve instalovanými kabely



Možností instalace

☐ Zatahování



PVC páska



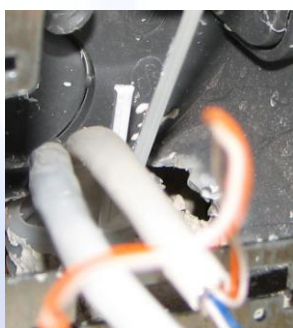
Drop kabel

Protahovací pero

☐ Zatlačování

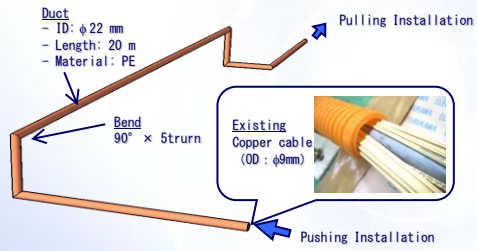


15mm



Funguje to?

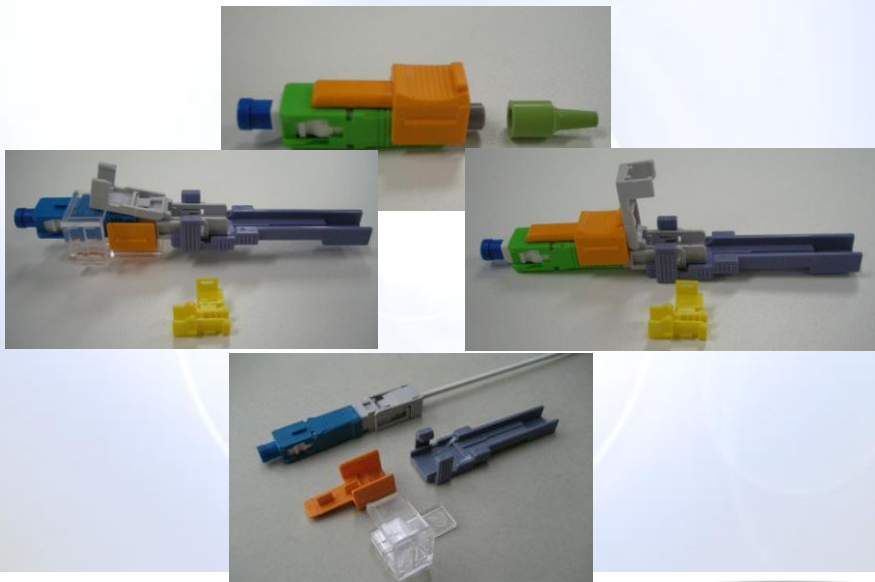
Zkušební výrobní závod



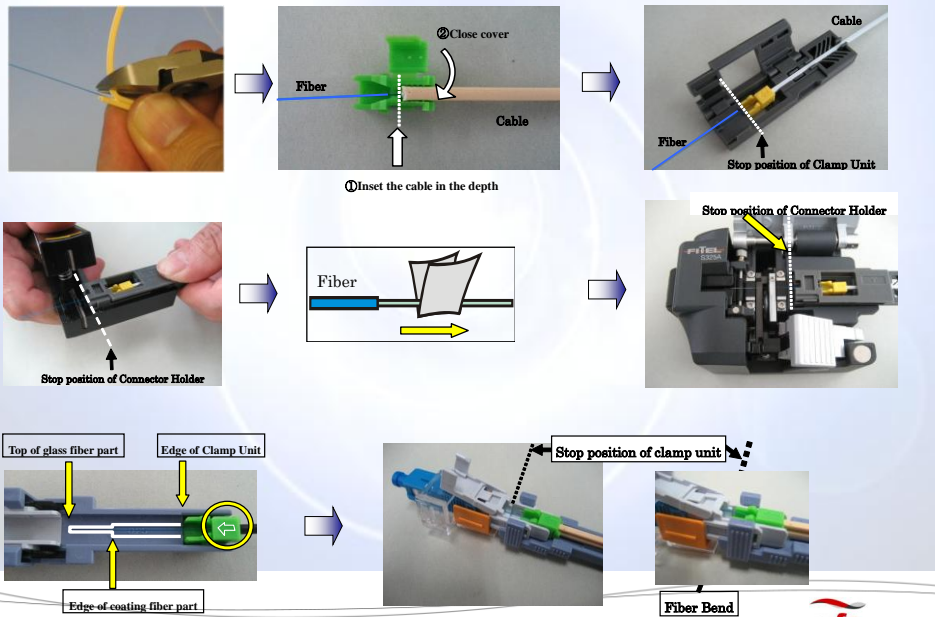
Poloměr ohybu 130 mm



MSOC – Mechanical Splice on Connectors



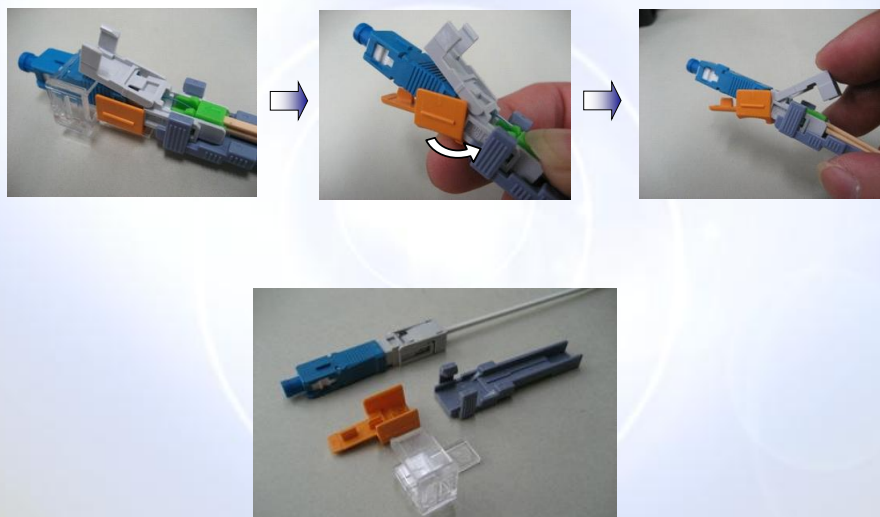
MSOC – Instalace konetoru na vlákno v kabelu



Page 9

ofs
A Furukawa Company

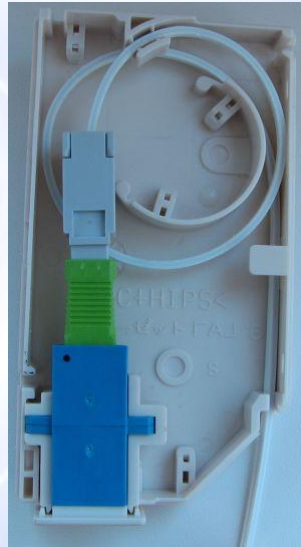
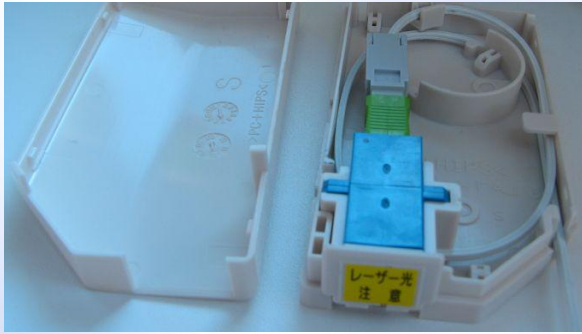
Instalace konektoru - uzavření



Page 10

ofs
A Furukawa Company

Účastnické rozhraní - Outlet



Th@nk
you !

Questions ?